

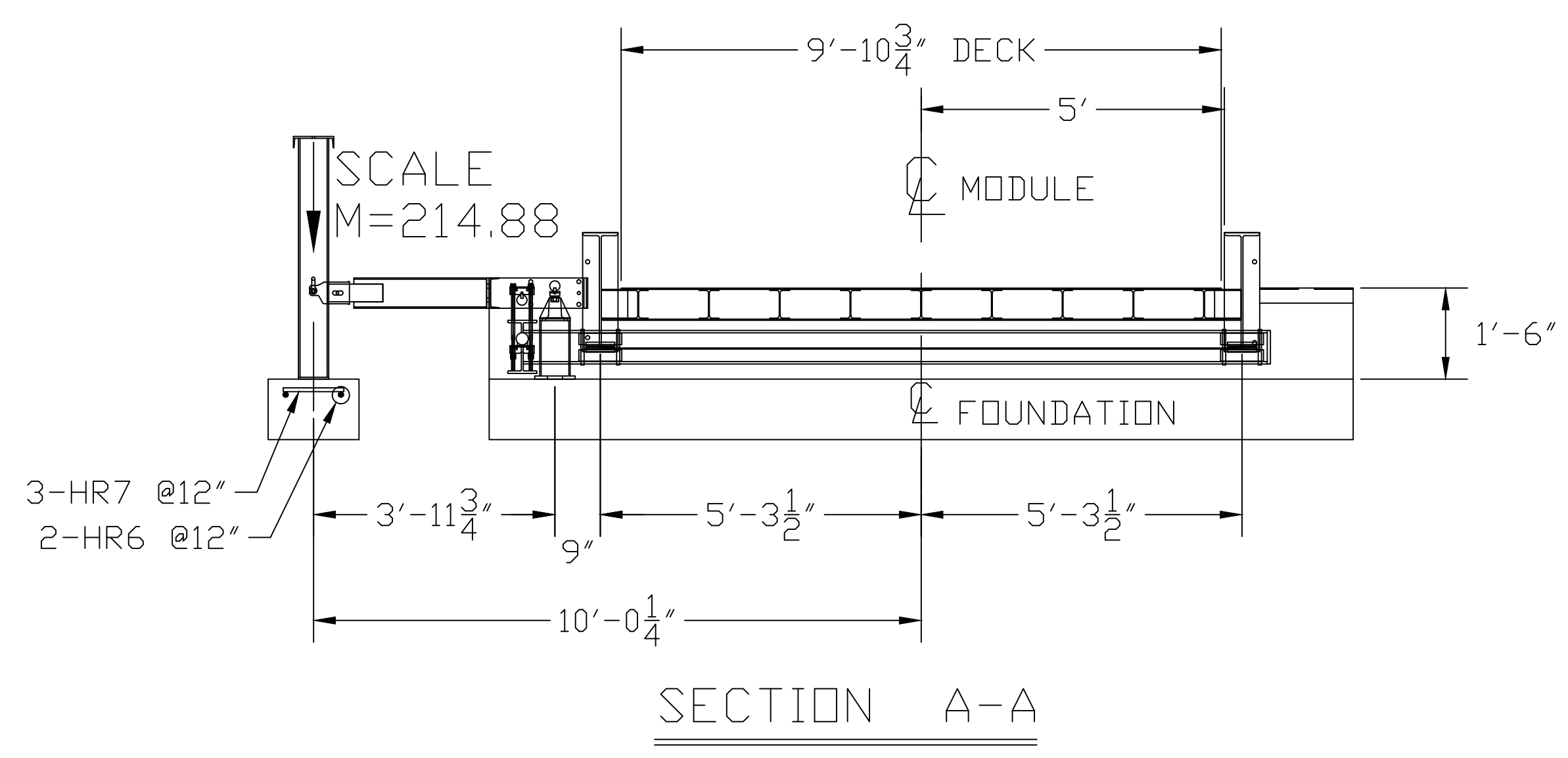
TYPICAL SIDE ELEVATION OF SCALE INSTALLATION

- NOTES:**
- FOUNDATION DESIGN IS BASED ON A MINIMUM SOIL BEARING CAPACITY OF 3000 LB/SQ. FT. FOR SOIL CONDITIONS WHICH DO NOT MEET THIS SPECIFICATION, CONSULT WITH THE THURMAN SCALE COMPANY.
  - THE FOUNDATION SHALL BE INSTALLED AT AN ELEVATION AND LOCATION TO INSURE ADEQUATE DRAINAGE AWAY FROM SCALE. A PERIMETER TRENCH AND AGGREGATE BASE MAY BE ADDED IF DRAINAGE IS NOT SUFFICIENT TO MAINTAIN 3000 LB/SQ. FT. BEARING CAPACITY.
  - BOTTOM OF FOOTERS SHOULD EXTEND BELOW THE FROST LINE. AN 18 INCH FOOTER DEPTH IS MINIMUM.
  - N.I.S.T. H-44 REQUIREMENTS AND LOCAL WEIGHTS AND MEASURES REGULATIONS MAY REQUIRE INSTALLATION PARAMETERS SOMEWHAT DIFFERENT THAN ILLUSTRATED ON THIS PLAN. IN ORDER TO INSURE COMPLIANCE, CONSULT THE LOCAL WEIGHTS & MEASURES OFFICE PRIOR TO CONSTRUCTION.
  - CONCRETE OF 4000 PSI MINIMUM COMPRESSIVE STRENGTH IS REQUIRED, WITH 5-7% AIR ENTRAINMENT. VIBRATE CONCRETE WHEN POURING. FOLLOW LATEST ACI REQUIREMENTS FOR MATERIALS AND CONSTRUCTION. DO NOT CAST UNLESS TEMPERATURE IS ABOVE 40 DEGREES FAHRENHEIT.
  - PIERS MUST BE LEVEL AND IN THE SAME PLANE WITHIN ±1/8 INCH.
  - EXCAVATION, FORMS, REINFORCING STEEL, GUARD POSTS, AND CONCRETE FURNISHED BY OTHERS.
  - DO NOT PLACE REBAR IN CLOSE PROXIMITY OF ANCHOR BOLTS.

| FOUNDATION REINFORCING SCHEDULE<br>ASTM 615 - GRADE 60 |     |      |        |              |                                 |
|--|-----|------|--------|--------------|---------------------------------|
| MARK   | QTY | SIZE | LENGTH | WEIGHT (LBS) | COMMENT                         |
| HR1  | 28  | #4   | 9'-6"  | 178          | LONG. EA. APPROACH              |
| HR2  | 96  | #4   | 13'-9" | 882          | LAT. EA. APPROACH; PIER         |
| HR3  | 112 | #4   | 3'-0"  | 225          | LONG. EA. PIER                  |
| HR4  | 2   | #4   | 10'-0" | 14           | LONG. DUAL FULCRUM PIER         |
| HR5  | 12  | #4   | 1'-4"  | 11           | LAT. EA. FULCRUM PIER           |
| HR6  | 6   | #4   | 2'-0"  | 9            | LONG. EA. FULCRUM PIER; LC PIER |
| HR7  | 3   | #4   | 1'-0"  | 2            | LAT. LOAD CELL PIER             |
| VR1  | 56  | #4   | 2'-8"  | 100          | VERT. EA. END WALL              |
| TOTAL WEIGHT   |     |      |        | 1,422        |                                 |

- REINFORCING STEEL NOTES:**
- REINFORCING STEEL SHALL BE FREE OF ALL MUD, DEBRIS, CEMENT GROUT, LOOSE RUST, GREASE, AND OIL.
  - TACK WELDING OF BARS IS PROHIBITED.

| FOUNDATION CONCRETE<br>4000 PSI MINIMUM |               |
|---|---------------|
| LOCATION                                | QTY (CU. YDS) |
| PIERS AS SHOWN                          | 12.9          |
| FLOOR AT 2" THICK                       | 6.0           |
| APPROACHES                              | 8.3           |
| OPTIONAL APPROACH SUPPORTS              | 2.5           |
| <b>TOTAL CONCRETE</b>                   | <b>29.8</b>   |



THIS DRAWING IS SUPPLIED AS CHECKED BELOW:

- REFERENCE (ESTIMATES ONLY, NOT FOR CONSTRUCTION)
- CERTIFIED FOR CONSTRUCTION, THURMAN SERIAL#
- CUSTOMER: \_\_\_\_\_ DATE: \_\_\_\_\_
- CUSTOMER P.O.# \_\_\_\_\_
- CUSTOMER APPROVAL, RETURN ONE COPY.
- (ORDER ON HOLD UNTIL SIGNED COPY IS RETURNED)
- APPROVED AS DRAWN, APPROVED BY: \_\_\_\_\_ DATE: \_\_\_\_\_
- APPROVED AS NOTED, APPROVED BY: \_\_\_\_\_ DATE: \_\_\_\_\_

| LET | BY  | DATE     | REVISION  |
|-----|-----|----------|---|
| 1   | JCR | 03/20/15 | CHANGED TO TWO 25' SPANS (VAS 2 30' SPANS); UPDATED CONCRETE/PREPAR SCHEDULES |

**THURMAN SCALE**  
COLUMBUS, OH

8140 60K CLC  
80' X 10' FOOTINGS  
FOUNDATION (4 SECTION)

DATE: 10/26/12  
SCALE: N/A  
DRAWN BY: JCR  
CHECKED BY: \_\_\_\_\_  
APPROVED BY: \_\_\_\_\_

SHEET 1 OF 1  
DRAWING NUMBER: 92529-FT  
REVISION: 1