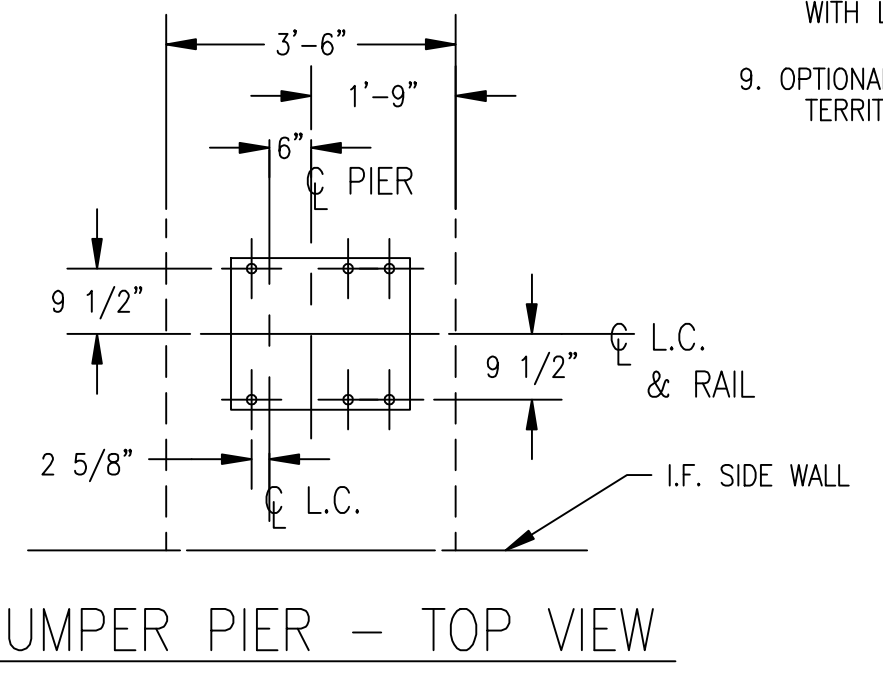
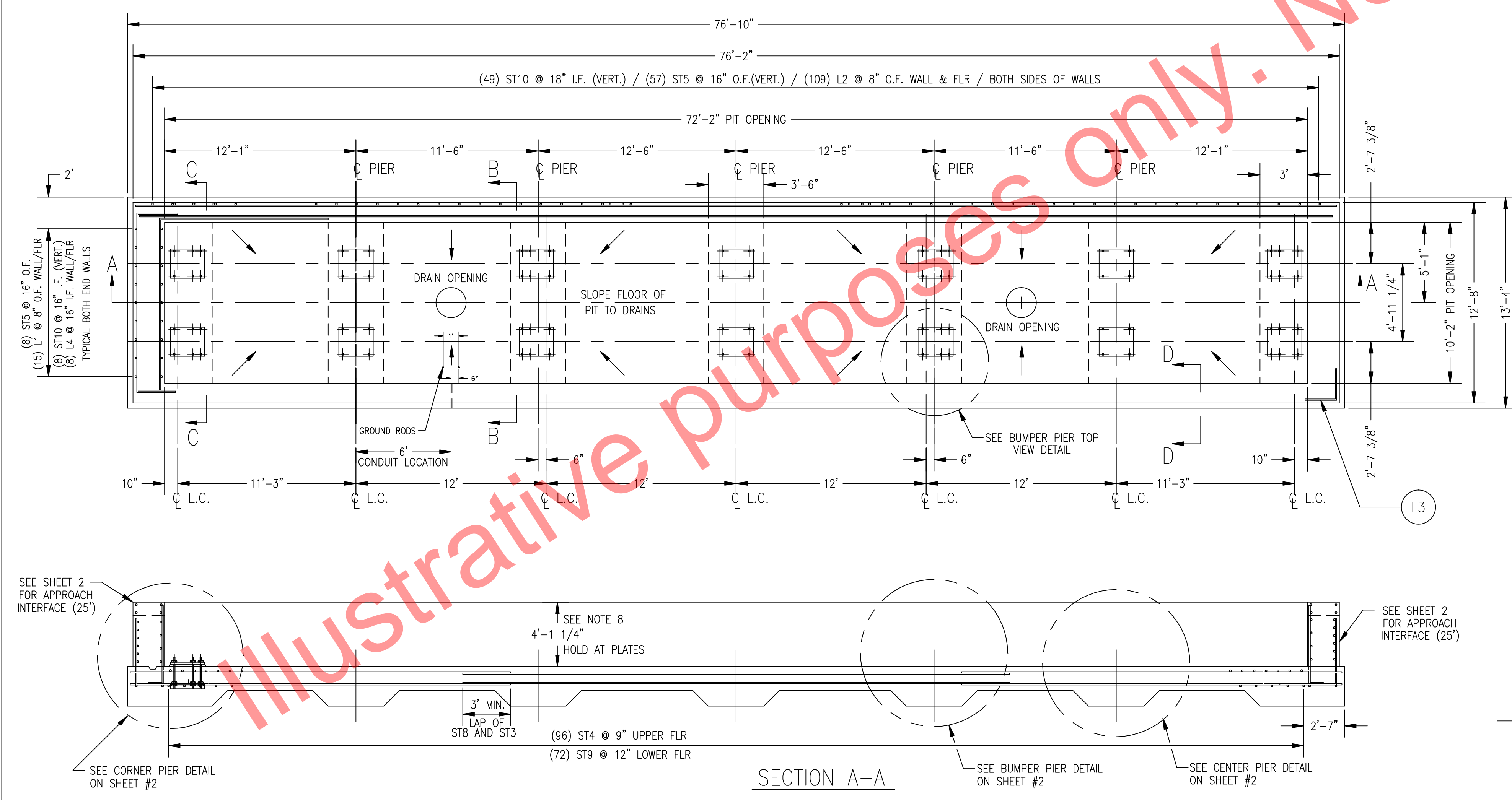
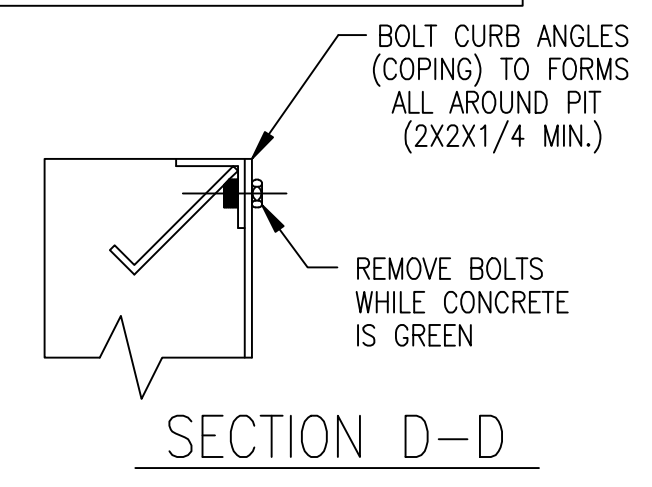


PIT REINFORCING STEEL SCHEDULE		A.S.T.M. A-615 GRADE 60							
COLD FORM BARS TO INSIDE DIMS.		A B C D E	A B C D E						
		U1-U3	Z1-Z2 C D	L1-L4					
SYM	SIZE QTY	LOCATION	TOTAL LENGTH	A	B	C	D	E	WEIGHT
L1	#6 30	END WALL O.F. / FLOOR	7'-0	3'-0	4'-0				315
L2	#6 218	SIDE WALL O.F. / FLOOR	6'-0	3'-0	3'-0				1965
L3	#6 8	TOP OF WALL CORNERS	4'-0	2'-0	2'-0				48
L4	#6 16	END WALL I.F. / FLOOR	3'-9	0'-9	3'-0				90
ST1	#6 75	FLOOR UNDER PIERS	6'-0						676
ST2									
ST3	#6 30	FLOOR UPPER LONG.	28'-0						1262
	96	FLOOR UPPER LATERAL							1622
	4	FLOOR BOTTOM ENDS							68
ST4	#6 20	FLOOR BOTTOM PIERS	11'-3						338
	8	END WALL I.F.							135
	8	FLOOR BTM. END PIERS							135
ST5	#6 16	END WALL O.F. (VERT.)	3'-10						92
ST6	#6 8	SIDE WALL O.F. (VERT.)	3'-3						656
ST7		TOP CENTER OF END WALL							39
ST8	#4 30	FLOOR BOTTOM LONG.	28'-0						561
	48	SIDE WALL I.F. AND O.F.							898
ST9	#4 72	FLOOR BOTTOM LATERAL	9'-0						433
	98	SIDE WALL I.F. (VERT.)							316
ST10	#4 16	END WALL I.F. (VERT.)	4'-10						52
ST11	#4 16	END WALL DIAGONALS	2'-8						29
U1	#6 12	END WALL / SIDE WALL	16'-3	2'-6	11'-3	2'-6			683

SUMMARY OF PIT QUANTITIES (*)	
CONCRETE	106 CU. YDS.
REINFORCEMENT STEEL	10,023 LBS
EXCAVATION	250 CU. YDS.

(*) NOT INCLUDING APPROACHES (SEE APPROACH DETAILS)

- NOTES:
- PIT DESIGN SPECIFICATIONS: THE PIT DESIGN IS BASED ON SUPERIMPOSED SCALE LOADS. NORMAL TRUCK SURCHARGE THAT GENERATES BEARING PRESSURE OF 4000 PSF. IF THE SOIL DOES NOT HAVE A BEARING PRESSURE OF AT LEAST 4000 PSF, AND ITS' CAPACITY CAN NOT BE INCREASED BY DRAINAGE, STABILIZATION OR OTHER MEANS, PILE FOUNDATIONS SHALL BE REQUIRED (BY OTHERS) PER A.A.R. (2.27.19).
 - UNUSUAL CONDITIONS: FOR UNUSUAL SOIL OR LOADING CONDITIONS, ARCHITECTURAL REQUIREMENTS OR AN INCREASE IN PIT DEPTH, THIS DESIGN MUST BE ALTERED ACCORDINGLY. IN ALL CASES, THE PIT BOTTOM MUST BE BELOW THE FIRST LINE.
 - DIMENSIONAL TOLERANCE: ALL INSIDE DIMENSIONS OF PIT, PIERS AND ANCHORS ARE TO BE LOCATED TRUE AND ACCURATE TO 1/8" OF DIMENSION GIVEN FROM PIT CENTER LINE. DIMENSIONS TO TOP OF PIERS FROM TOP OF CURB ANGLES MUST BE HELD TO +/- 1/8". TOP OF CURB ANGLES MUST BE LEVEL.
 - CONCRETE AND STEEL SPECIFICATIONS: USE 4000 PSI COMPRESSIVE STRENGTH CONCRETE AT 28 DAY AGE. USE AIR ENTRAINMENT OF 5-7%. ALL REINFORCING STEEL TO BE DEFORMED BARS, ASTM A-615, GRADE 60. ALL CONCRETE AND REINFORCING STEEL SHALL BE PLACED ACCORDING TO THE BEST PRACTICE AS PRESCRIBED BY THE LATEST A.R.E.A. MANUAL (CHAPTER 8) AND A.C.I. CODE.
 - GENERAL INFORMATION: EXCAVATION, FOUNDATION FORMS, REINFORCING STEEL, PIT COPING, GROUT AND CONCRETE TO BE FURNISHED BY CONTRACTOR.
 - APPROACHES: APPROACH AT EACH END OF SCALE SHOULD BE STRAIGHT, IN THE SAME PLANE AS PLATFORM, AND 25'-0 MINIMUM LENGTH. APPROACHES SHOULD COMPLY WITH STATE WEIGHTS AND MEASURES REGULATIONS.
 - EPOXY GROUTING: SCALE GROUT PLATES MUST BE EPOXY GROUTED IN PLACE AFTER THE ENTIRE SCALE SYSTEM IS IN CORRECT WEIGHING POSITION. USE A NON-SHRINK EPOXY TYPE GROUT TO DEVELOP 10,000 PSI COMPRESSIVE STRENGTH. FOLLOW THE GROUT MANUFACTURER INSTRUCTIONS FOR SURFACE PREPARATION, FORMS, MIXING AND PLACEMENT PROCEDURES.
 - PIT DEPTH OPTIONAL BASED ON STATE REQUIREMENTS. RECOMMENDED PIT DEPTH IS 5'-6 MINIMUM (4'-1 1/4" PIT DEPTH SHOWN). REQUIREMENTS VARY, CHECK WITH LOCAL WEIGHTS AND MEASURES DIVISION AND THE SERVING RAIL LINE.
 - OPTIONAL WALL BATTER IF REQUIRED BY STATE OR CUSTOMER (TYPICAL IN FREEZING TERRITORY). WALLS SHOULD BE BATTERED 1:12 MINIMUM.



APPREVIATIONS USED ON THIS DRAWING

LC - LOAD CELL
 FLR - FLOOR
 LONG. - LONGITUDINAL
 O.F. - OUTSIDE FACE
 I.F. - INSIDE FACE

MODEL 8710 PIT WITHOUT PIERS
 SHEET 1 OF 3

THIS DRAWING IS SUPPLIED AS CHECKED BELOW:

REFERENCE (ESTIMATES ONLY, NOT FOR CONSTRUCTION)

CERTIFIED FOR CONSTRUCTION, THURMAN

CUSTOMER: _____ DATE: _____

CUSTOMER P.O.# _____

CUSTOMER APPROVAL, RETURN ONE COPY (ORDER ON HOLD UNTIL SIGNED COPY IS RETURNED)

APPROVED AS DRAWN, APPROVED BY: _____ DATE: _____

APPROVED AS NOTED, APPROVED BY: _____ DATE: _____

TOLERANCES UNLESS OTHERWISE SPECIFIED: ± 1/8"

DIMENSIONS ARE IN INCHES UNLESS OTHERWISE SPECIFIED

DATE: 03/30/09

DRAWN BY: LDC

THURMAN
 255 E. LIVINGSTON AVE.
 COLUMBUS, OHIO 43215
 PH: 614-221-9877
 FAX: 614-221-9878

TITLE: 8710 COMBO TRUCK/RR SCALE
 72'X10' PIT DETAILS 115#/YD A.R.E.A. RAILS

DRAWING NUMBER: 92178-DP4

SHEET 1 OF 3

Illustrative purposes only. Not for construction.