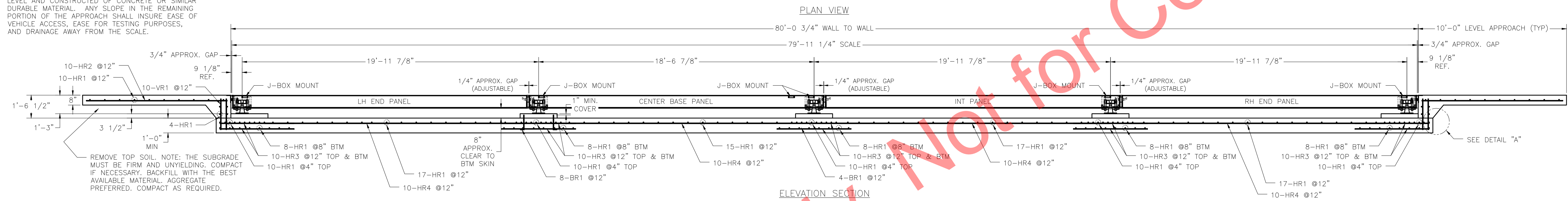


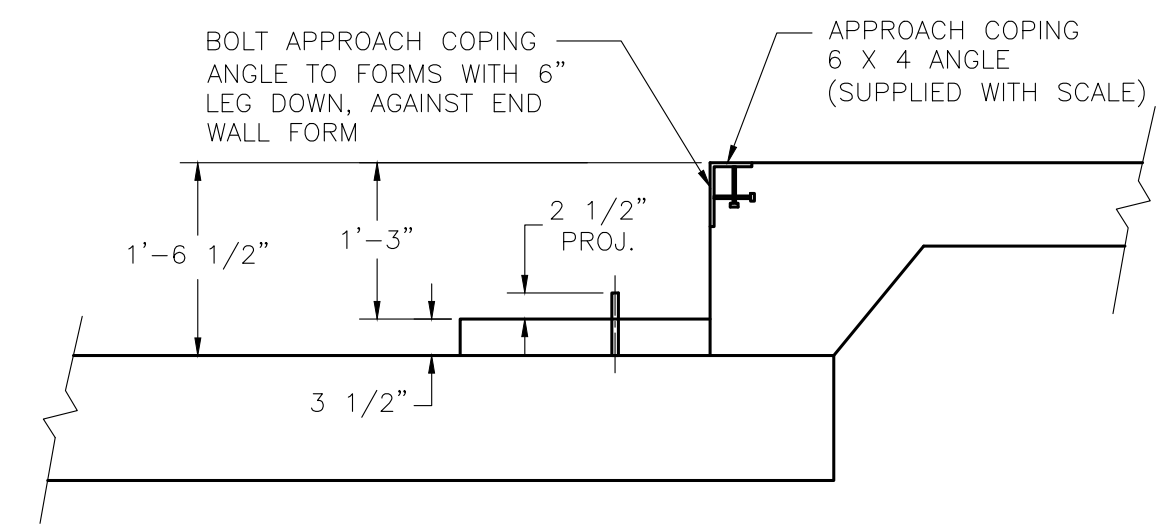
N.I.S.T. H-44 REQUIRES THAT ON THE APPROACH ENDS OF THIS VEHICLE SCALE, THERE SHALL BE A STRAIGHT APPROACH AT LEAST HALF THE LENGTH OF THE PLATFORM, BUT NOT REQUIRED TO BE MORE THAN 40 FEET, NOT LESS THAN 10 FEET OF ANY APPROACH ADJACENT TO THE PLATFORM SHALL BE LEVEL AND CONSTRUCTED OF CONCRETE OR SIMILAR DURABLE MATERIAL. ANY SLOPE IN THE REMAINING PORTION OF THE APPROACH SHALL INSURE EASE OF VEHICLE ACCESS, EASE FOR TESTING PURPOSES, AND DRAINAGE AWAY FROM THE SCALE.

INSTALL (2) 3/4" X 8'-0" LONG GROUND RODS (TO PROJECT 3") ONE FOR GROUNDING INTALOGIX POWER SUPPLY, ONE FOR GROUND SCALE WEIGHBRIDGE. POWER SUPPLY GROUND MUST BE SEPARATE FROM WEIGHBRIDGE GROUND. TWO GROUND RODS ARE SUPPLIED WITH SCALE.

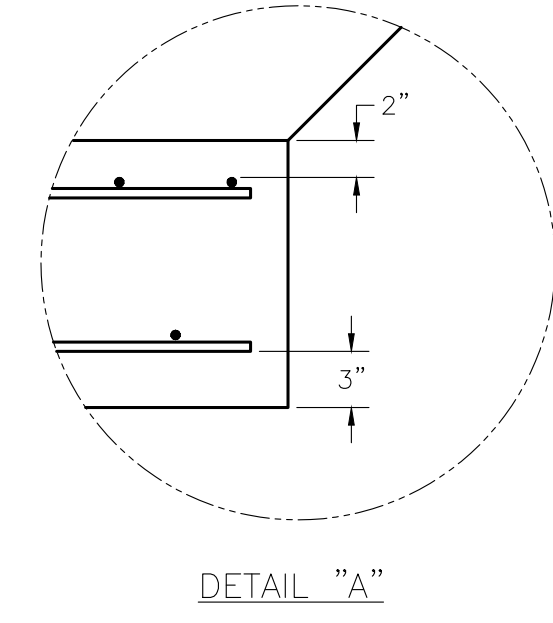


FOUNDATION CONCRETE	
4000 PSI MINIMUM	
LOCATION	QTY (CU. YDS)
PIERS	1
SLAB	30.5
APPROACHES	6
TOTAL CONCRETE	37.5

FOUNDATION REINFORCING SCHEDULE							
ASTM 615 - GRADE 60							
MARK	QTY	SIZE	A	B	LENGTH	WEIGHT (LBS)	REMARKS
HR1	184	#4			9'-6"	1168	LATERAL IN MULTIPLE LOCATIONS
HR2	20	#4			9'-6"	127	LONGITUDINAL IN APPROACH (10/EA)
HR3	100	#4			5'-0"	334	LONGITUDINAL TOP & BTM FACE UNDER SECTIONS (10/EA)
HR4	40	#4			18'-0"	481	LONGITUDINAL IN SLAB BETWEEN SECTIONS (10/EA)
VR1	40	#4			2'-0"	54	VERTICAL IN END WALL
BR1	80	#4	1'-0"	0'-3"	1'-3"	67	VERTICAL IN EACH PIER
TOTAL WEIGHT						2,231	



DRILL TYPE ANCHOR INFORMATION (DRILL TYPE ANCHORS PROVIDED WITH THE SCALE)
 FOR THE LC STANDS (20 REQUIRED)
 5/8 DIA X 6" STUD TYPE ANCHORS
 DRILL DIA 5/8", DRILL DEPTH 3 1/2"



- CONCRETE POURING & FINISHING INSTRUCTIONS FOR SCALE DECK:
- REFER TO SCALE INSTALLATION MANUAL PRIOR TO SETTING SCALE PANELS.
 - MASK THE GAPS BETWEEN MODULES WITH DUCT TAPE. MASK INNER END OF COUPLING NUTS.
 - POUR CONCRETE IN EACH MODULE. USE 4000 PSI CONCRETE MINIMUM. 5%-7% AIR ENTRAINMENT. APPROX. 24 CU. YD. OF CONCRETE REQD. FOR SCALE DECK. NOTE: DO NOT CAST UNLESS TEMPERATURE IS ABOVE 40 DEGREES FAHRENHEIT. CONSOLIDATE CONCRETE BY USE OF A VIBRATOR TO ASSURE A THOROUGH FILL.
 - FINISH THE CONCRETE DECK WITH A BULL FLOAT AND HAND TROWEL OR BROOM TO THE DESIRED FINISH.
 - REMOVE DUCT TAPE AND CLEAN THE EXCESS CONCRETE FROM THE SIDES OF THE SCALE.
 - THE CONCRETE IS TO BE MOST CURED FOR SEVEN DAYS OR MAY ALTERNATIVELY RECEIVE A COAT OF LIQUID CURING COMPOUND.
 - DO NOT USE OR CALIBRATE THE SCALE UNTIL THE DECK IS CURED AND HAS REACHED 4000 PSI MINIMUM COMPRESSIVE STRENGTH.

- NOTES:
- FOUNDATION SHOWN IS DESIGNED FOR SOILS WITH A MINIMUM BEARING CAPACITY OF 2000 PSF AND ADEQUATE DRAINAGE. IF SOIL CONDITIONS DO NOT MEET THESE REQUIREMENTS, ADJUST FOUNDATION OR SOIL CONDITIONS AS REQUIRED.
 - IN AREAS OF THE COUNTRY WHERE THERE IS SEVERE FREEZING, INCREASE THE DEPTH OF THE FOUNDATION SO THAT THE BOTTOM EXTENDS BELOW THE FROST LINE, OR PROVIDE A MINIMUM OF 12" FREE DRAINING GRANULAR MATERIAL TO PREVENT FROST HEAVE.
 - N.I.S.T. H-44 REQUIREMENTS AND LOCAL WEIGHTS AND MEASURES REGULATIONS MAY REQUIRE INSTALLATION PARAMETERS SOMEWHAT DIFFERENT THAN ILLUSTRATED ON THIS PLAN. IN ORDER TO INSURE COMPLIANCE, CONSULT THE LOCAL WEIGHTS & MEASURES OFFICE PRIOR TO CONSTRUCTION.
 - REFER TO SCALE MANUAL FOR INSTALLATION AND OPERATION INSTRUCTIONS.
 - A MINIMUM OF 24" OF CLEARANCE IS REQUIRED ON JUNCTION BOX SIDE OF THE SCALE NEAR THE BOX MOUNTS.

THIS DRAWING IS SUPPLIED AS CHECKED BELOW:
 REFERENCE (ESTIMATES ONLY, NOT FOR CONSTRUCTION)
 CERTIFIED FOR CONSTRUCTION, THURMAN SERIAL#
 CUSTOMER: _____ DATE: _____
 CUSTOMER P.O.# _____ DATE: _____
 CUSTOMER APPROVAL, RETURN ONE COPY.
 (ORDER ON HOLD UNTIL SIGNED COPY IS RETURNED)
 APPROVED AS DRAWING, APPROVED BY: _____ DATE: _____
 APPROVED AS NOTED, APPROVED BY: _____ DATE: _____

THE INFORMATION CONTAINED HEREIN AND IN ANY OTHER DRAWINGS IS UNCLASSIFIED AND CONFIDENTIAL PROPERTY OF THURMAN SCALE. IT IS TO BE USED ONLY FOR THE PROJECT AND NOT BE REPRODUCED, COPIED, DISCLOSED, OR TRANSMITTED IN ANY FORM OR BY ANY MEANS, WITHOUT WRITTEN PERMISSION FROM THURMAN SCALE. THURMAN SCALE ASSUMES NO RESPONSIBILITY FOR ERRORS TO THIS DOCUMENT AFTER PROOFING THEREOF.

UNLESS OTHERWISE SPECIFIED, DIMENSIONS IN DECIMALS ARE AS FOLLOWS:
 FRACTIONS: 1/8", 1/4", 3/8", 1/2", 5/8", 3/4", 7/8", 1"
 3-PLACE DECIMAL: #000
 2-PLACE DECIMAL: #00
 HOLE DIAMETERS: #1/32"

8550DB 90K CLC
 80'x10' (4M/5S)
 FULL SLAB FOUNDATION
 3.5" RISER PIERS

THURMAN SCALE
 COLUMBUS, OH

SCALE: VARIES DRAWN: LDC CHECKED: _____
 SHEET: 1 OF 1 DATE: 9/12/14 APPROVED: _____
 DRAWING NUMBER: 92351-SL-RP REV: 0