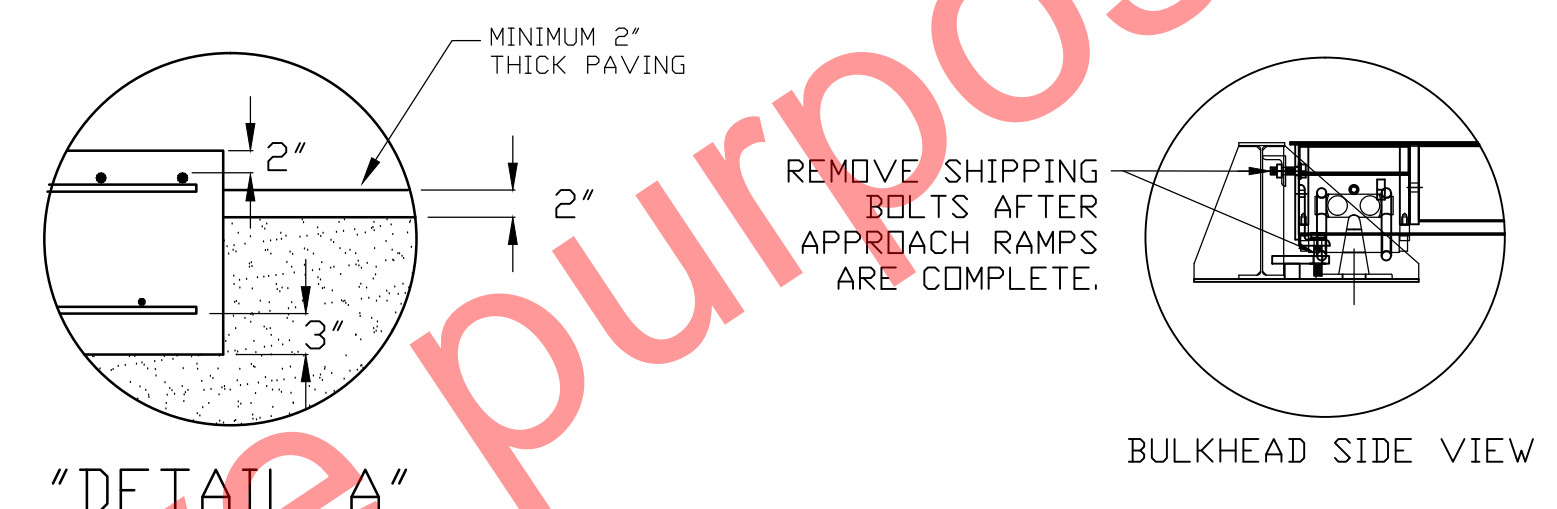
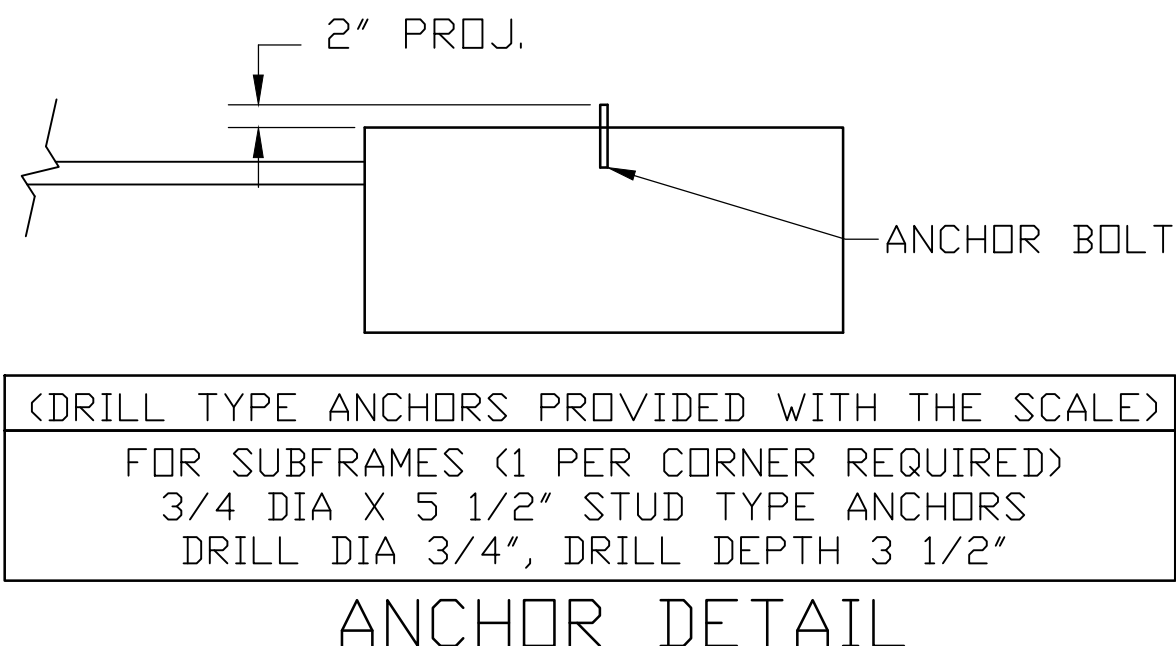
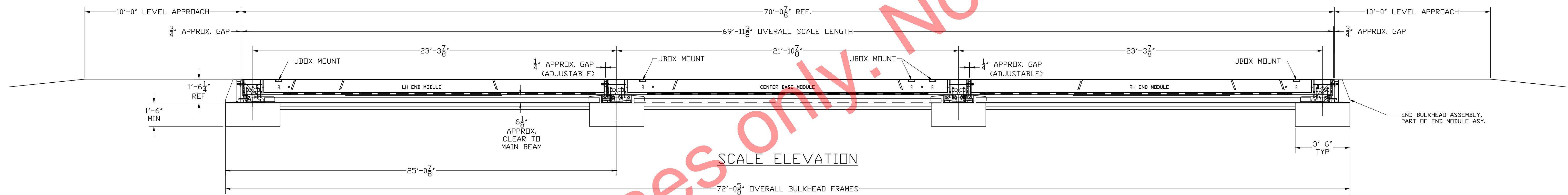
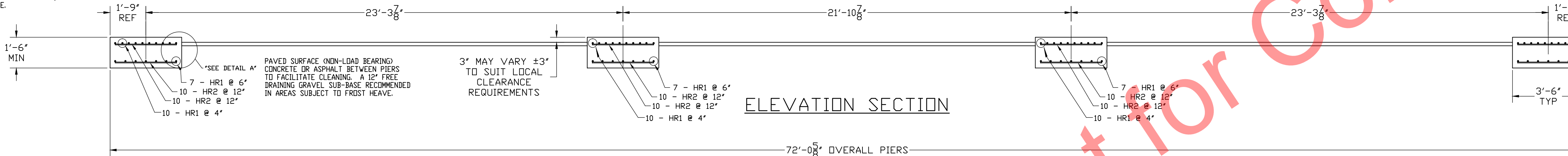


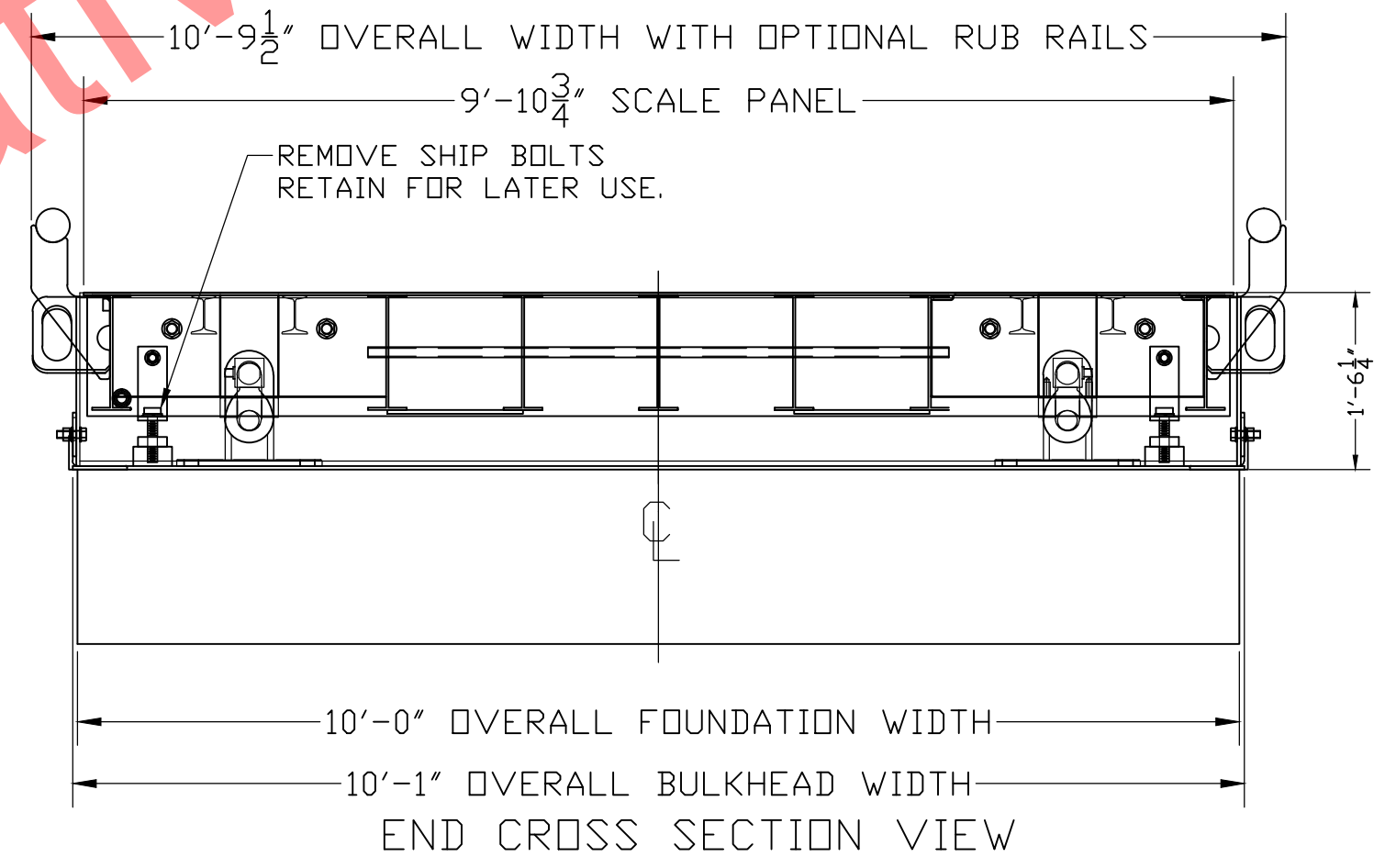
N.I.S.T. H-44 REQUIRES THAT ON THE APPROACH ENDS OF THIS VEHICLE SCALE, THERE SHALL BE A STRAIGHT APPROACH AT LEAST 25 FEET LONG. NOT LESS THAN 10 FEET OF ANY APPROACH ADJACENT TO THE PLATFORM SHALL BE LEVEL. ANY SLOPE IN THE REMAINING PORTION OF THE APPROACH SHALL INSURE EASE OF VEHICLE ACCESS. EASE FOR TESTING PURPOSES, AND DRAINAGE AWAY FROM THE SCALE.

INSTALL (2) 3/4" x 8'-9" LONG GROUND RODS (TO PROJECT 3") ONE FOR GROUNDING INTALOGX POWER SUPPLY, ONE FOR GROUNDING SCALE WEIGHTBRIDGE. POWER SUPPLY GROUND MUST BE SEPARATE FROM WEIGHTBRIDGE GROUND. TWO GROUND RODS ARE SUPPLIED WITH SCALE.



FOUNDATION CONCRETE REQUIREMENTS	
4000 P.S.I.	
AREA	QUANTITIES
PIERS AS SHOWN	8 CU. YD.
FLOOR AT 2" THICK	4 CU. YD.
TOTAL	12 CU. YD.

FOUNDATION REINFORCING BAR SCHEDULE				
ASTM A615 GRADE 60				
MARK	NO. REQ'D.	SIZE	LENGTH	WT.
HR1	68	#4	9'-6"	432
HR2	80	#4	3'-0"	161
TOTAL WT:				593



NOTES:

- FOUNDATION SHOWN IS DESIGNED FOR SOILS WITH A MINIMUM BEARING CAPACITY OF 3000 PSF AND ADEQUATE DRAINAGE. IF SOIL CONDITIONS DO NOT MEET THESE REQUIREMENTS, ADJUST FOUNDATION OR SOIL CONDITIONS AS REQUIRED.
- IN AREAS OF THE COUNTRY WHERE THERE IS SEVERE FREEZING, INCREASE THE DEPTH OF THE FOUNDATION SO THAT THE BOTTOM EXTENDS BELOW THE FROST LINE, OR PROVIDE A MINIMUM OF 12" FREE DRAINING GRANULAR MATERIAL TO PREVENT FROST HEAVE.
- N.I.S.T. H-44 REQUIREMENTS AND LOCAL WEIGHTS AND MEASURES REGULATIONS MAY REQUIRE INSTALLATION PARAMETERS SOMEWHAT DIFFERENT THAN ILLUSTRATED ON THIS PLAN. IN ORDER TO INSURE COMPLIANCE, CONSULT THE LOCAL WEIGHTS & MEASURES OFFICE PRIOR TO CONSTRUCTION.
- REFER TO SCALE MANUAL FOR INSTALLATION AND OPERATION INSTRUCTIONS.
- A MINIMUM OF 24" OF CLEARANCE IS REQUIRED ON JUNCTION BOX SIDE OF THE SCALE NEAR THE BOX MOUNTS.

ASSEMBLY NOTES:

- REFER TO SCALE MANUAL FOR FULL INSTALLATION AND OPERATION INSTRUCTIONS.
- KEEP ALL SHIP BOLTS AND CHECK BOLTS SECURED UNTIL ALL INSTALLATION AND APPROACH RAMP WORK IS COMPLETE.
- PLACE CENTER-BASE MODULE FIRST, FOLLOWED BY END MODULES. PLACE MODULES WITH JBOX MOUNTS ALL ON ONE SIDE AS SHOWN.
- BOLT END PANELS TO CENTER BASE PANEL & SET ANCHORS IN SECTION STANDS.
- IF UNABLE TO ANCHOR STANDS, INSTALL BRACES BETWEEN BULKHEADS AND SECTION STANDS.
- AFTER ALL APPROACH WORK IS COMPLETED, REMOVE SHIPPING BOLTS AND SET PROPER GAPS OF BUMPER (CHECK SYSTEM) BOLTS.
- KEEP SHIPPING HARDWARE FOR LATER USE.

THIS DRAWING IS SUPPLIED AS CHECKED BELOW:
 REFERENCE (ESTIMATES ONLY, NOT FOR CONSTRUCTION)
 CERTIFIED FOR CONSTRUCTION, THURMAN #
 CUSTOMER: _____ DATE: _____
 CUSTOMER APPROVAL, RETURN ONE COPY (ORDER ON HOLD UNTIL SIGNED COPY IS RETURNED)
 APPROVED AS DRAWN, APPROVED BY: _____ DATE: _____
 APPROVED AS NOTED, APPROVED BY: _____ DATE: _____

LET	BY	DATE	REVISION
2	LDC	1/6/12	ADDED BRACES

THURMAN SCALE
 COLUMBUS, OH
 8560DB 70'X10' DIAMONDBACK PV
 FOUNDATION (90K CLC, 4 SEC DB)

DATE: 2/27/07
 SCALE: N/A
 DRAWN BY: HAWK
 CHECKED BY: _____
 APPROVED BY: _____

SHEET 1 OF 1
 MODEL: _____
 DRAWING NUMBER: 92390-PV
 REVISION: 2