

CONCRETE POURING & FINISHING INSTRUCTIONS FOR SCALE DECK:

- FINISH THE CONCRETE DECK WITH A BULL FLOAT AND HAND TROWEL OR BROOM TO THE DESIRED FINISH.
- THE CONCRETE IS TO BE MOIST CURED FOR SEVEN DAYS OR MAY ALTERNATIVELY RECEIVE A COAT OF LIQUID CURING COMPOUND.
- DO NOT USE OR CALIBRATE THE SCALE UNTIL THE DECK IS CURED AND HAS REACHED 4000 PSI MINIMUM COMPRESSIVE STRENGTH.

FOUNDATION CONCRETE 4000 PSI MINIMUM	
LOCATION	QTY (CU. YDS)
PIERS AS SHOWN	23.5
FLOOR AT 6" THICK	9
APPROACHES	13
MODULES	12.5
TOTAL CONCRETE	58 CU. YDS.

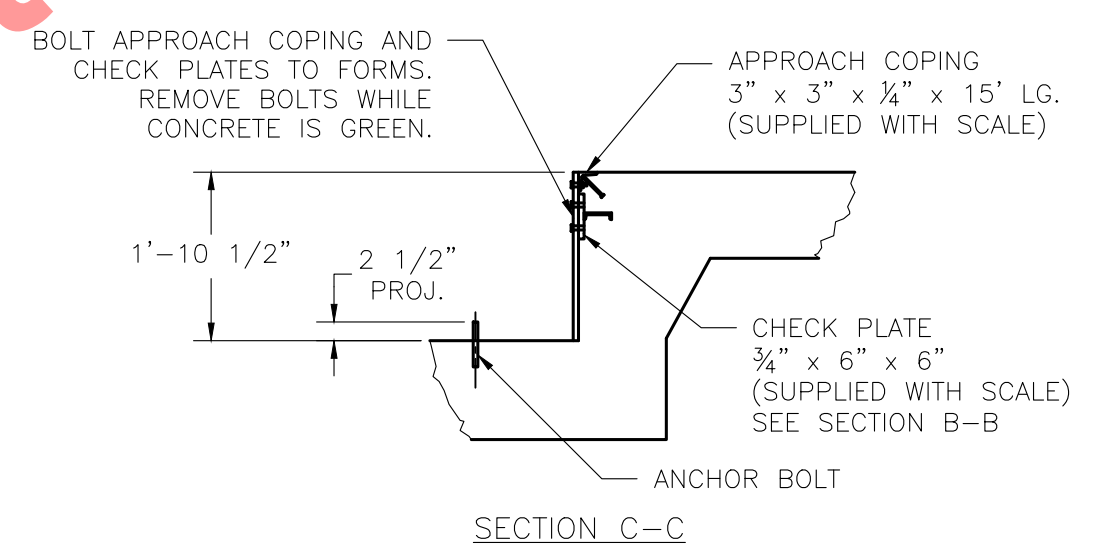
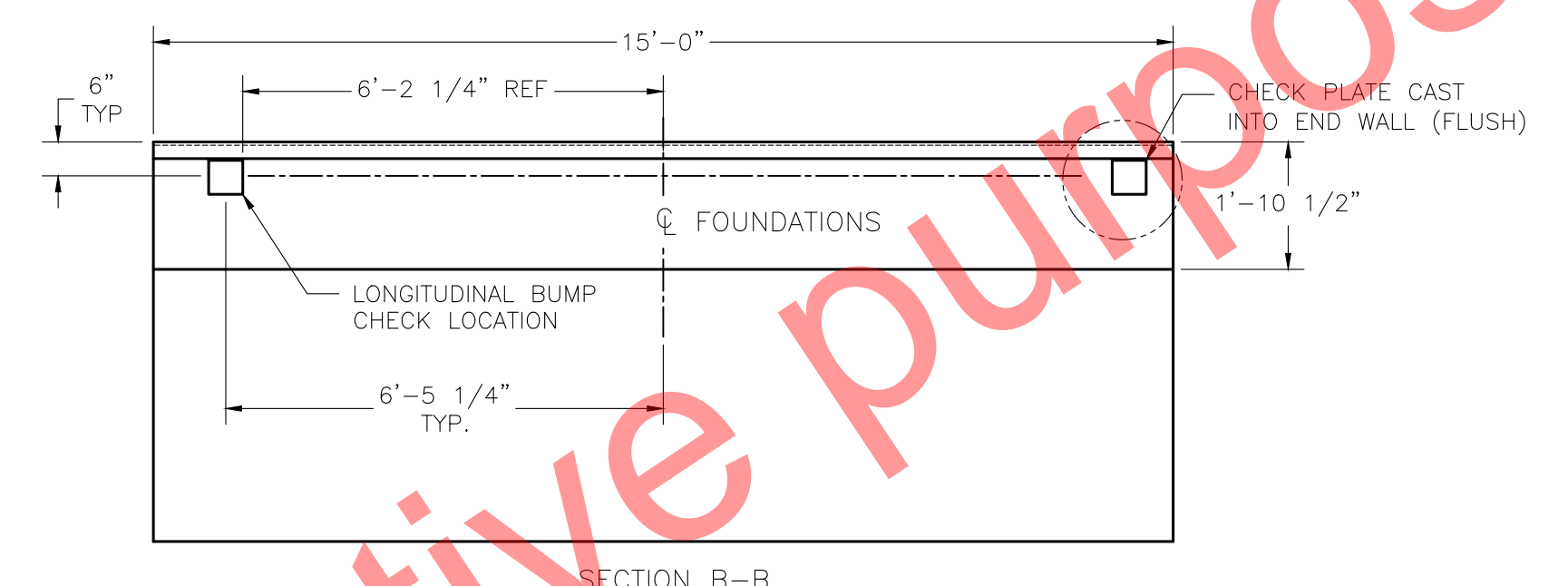
MODULE REINFORCING SCHEDULE ASTM 615 - GRADE 60					
MARK	QTY	SIZE	LENGTH	WEIGHT (LBS)	REMARKS
D1	56	#6	12'-3"	1031	(7) EA. BAY, PERPENDICULAR TO TRAFFIC
D2	112	#6	4'-6"	758	(14) EA. BAY, PARALLEL TO TRAFFIC
TOTAL WEIGHT				1,789	

FOUNDATION REINFORCING SCHEDULE ASTM 615 - GRADE 60					
MARK	QTY	SIZE	LENGTH	WEIGHT (LBS)	REMARKS
HR1	60	#4	9'-6"	381	(30) EA. APPROACH
HR2	82	#4	14'-6"	795	(26) EA. APPROACH; (10) EA. PIER
HR3	15	#4	4'-10"	49	(15) INTERIOR PIER
HR4	30	#4	3'-11"	79	(15) EA. END PIER
VR1	60	#4	3'-0"	121	(30) EA. END WALL VERT.
TOTAL WEIGHT				1,425	

*PLUS APPROX. 500 SQ. FT. OF WWF OR EQUAL AS NOTED IN ELEVATION VIEW

REINFORCING STEEL NOTES:

- REINFORCING STEEL SHALL BE FREE OF ALL MUD, DEBRIS, CEMENT GROUT, LOOSE RUST, GREASE, AND OIL.
- TACK WELDING OF BARS IS PROHIBITED.



DRILL TYPE ANCHOR INFORMATION (DRILL TYPE ANCHORS PROVIDED WITH THE SCALE)	
FOR THE LC STANDS (12 REQUIRED)	5/8 DIA X 6" STUD TYPE ANCHORS DRILL DIA 5/8", DRILL DEPTH 3 1/2"

- NOTES:
- FOUNDATION DESIGN IS BASED ON A MINIMUM SOIL BEARING CAPACITY OF 3000 LB/SQ. FT. FOR SOIL CONDITIONS WHICH DO NOT MEET THIS SPECIFICATION, CONSULT WITH THE THURMAN SCALE COMPANY.
 - THE FOUNDATION SHALL BE INSTALLED AT AN ELEVATION AND LOCATION TO INSURE ADEQUATE DRAINAGE AWAY FROM SCALE. A PERIMETER TRENCH AND AGGREGATE BASE MAY BE ADDED IF DRAINAGE IS NOT SUFFICIENT TO MAINTAIN 3000 LB/SQ. FT. BEARING CAPACITY.
 - BOTTOM OF FOOTERS SHOULD EXTEND A MINIMUM OF 12" BELOW THE FROST LINE. A 48 INCH FOOTER DEPTH IS MINIMUM.
 - N.I.S.T. H-44 REQUIREMENTS AND LOCAL WEIGHTS AND MEASURES REGULATIONS MAY REQUIRE INSTALLATION PARAMETERS SOMEWHAT DIFFERENT THAN ILLUSTRATED ON THIS PLAN. IN ORDER TO INSURE COMPLIANCE, CONSULT THE LOCAL WEIGHTS & MEASURES OFFICE PRIOR TO CONSTRUCTION.
 - CONCRETE OF 4000 PSI MINIMUM COMPRESSIVE STRENGTH IS REQUIRED, WITH 5-7% AIR ENTRAINMENT. VIBRATE CONCRETE WHEN POURING. FOLLOW LATEST ACI REQUIREMENTS FOR MATERIALS AND CONSTRUCTION. DO NOT CAST UNLESS TEMPERATURE IS ABOVE 40 DEGREES FAHRENHEIT.
 - PIERS MUST BE LEVEL AND IN THE SAME PLANE WITHIN ±1/8" INCH.
 - EXCAVATION, FORMS, REINFORCING STEEL, GUARD POSTS, AND CONCRETE FURNISHED BY OTHERS. OPTIONAL REBAR KITS (FOR THE SCALE DECK) ARE AVAILABLE FROM THURMAN.
 - DO NOT PLACE REBAR IN CLOSE PROXIMITY OF ANCHOR BOLTS.
 - A MINIMUM OF 24" OF CLEARANCE IS REQUIRED ON JUNCTION BOX SIDE OF THE SCALE NEAR THE BOX MOUNTS.
 - CAUTION! THE MAIN GIRDERS SHOULD NEVER BE USED AS A STEP. SLIPPERY WHEN WET.

- ASSEMBLY
- POSITION LOAD CELL ASSEMBLIES IN APPROXIMATE LOCATIONS.
 - ASSEMBLE THE GIRDERS W/ THE CHECK BLOCK AND PROVISION FOR 2 LC FIRST. LAYOUT GIRDERS & LOOSELY ATTACH CROSSBEAMS, CROSS-SQUARE AND TIGHTEN BOLTS. JACK UP & ATTACH TOP BRACKETS & PIN SEATS TO THE BOTTOM FLANGE OF THE GIRDERS.
 - SET THE LOADCELL ASSY UNDER THE PIN SEATS OF THE BASE MODULE.
 - ASSEMBLE REMAINING MODULES BUILDING FROM THE BASE MODULE. PLACE NEXT PAIR OF GIRDERS ON STEP PLATE OF BASE MODULE & ON LOADCELL ASSY. INSTALL THE MODULE CONNECTION BOLTS THROUGH THE CONNECTION JOINT. LOOSELY ATTACH CROSSBEAMS. REPEAT UNTIL ALL MODULES ARE BUILT.
 - CHECK SQUARENESS OF THE SCALE & ADJUST IF NECESSARY TO BRING INTO SQUARE. MAINTAIN EQUAL DISTANCE TO PIT WALL AT EACH END.
 - TIGHTEN ALL CROSSBEAM BOLTS ONE-HALF TURN PAST SNUG. TIGHTEN ALL MODULE CONNECTION BOLTS. SET LONGITUDINAL CHECK BOLTS. ANCHOR STANDS AFTER LOADCELL ASSY PLUMB.

- DECK REINFORCEMENT
- TO PREVENT PAN FROM SAGGING WHILE POURING, ADDITIONAL SHORING SUPPORT BENEATH THE CORRUGATED PAN IS REQUIRED. THURMAN OFFERS OPTION SHORING KIT FOR THIS PURPOSE
 - CORRUGATED PAN SHOULD HAVE THE FOLLOWING MINIMUM SPECIFICATIONS: THICKNESS: 24 GAUGE MIN. PITCH: 2 1/2", HEIGHT: 5/8" MAX CUT TO LENGTH: 7'-0" X 2'-6"
 - IF SUPPLIED WITH OPTIONAL REBAR MAT, TIE ABOVE STUDS. IF REINFORCEMENT SUPPLIED BY OTHERS, FOLLOW REBAR SCHEDULE
 - POUR CONCRETE. SEE NOTE 5 ABOVE.

THIS DRAWING IS SUPPLIED AS CHECKED BELOW:

- REFERENCE (ESTIMATES ONLY, NOT FOR CONSTRUCTION)
- CERTIFIED FOR CONSTRUCTION, THURMAN SERIAL#
- CUSTOMER P.O.#
- CUSTOMER APPROVAL, RETURN ONE COPY.
- ORDER ON HOLD UNTIL SIGNED COPY IS RETURNED
- APPROVED AS DRAWING, APPROVED BY: DATE:
- APPROVED AS NOTED, APPROVED BY: DATE:

REVISIONS			
REV	BY	DATE	DESCRIPTION
1	JCR	3/31/2015	UPDATED TITLE BLOCK, DRAFTING STANDARDS, BEAM SIZES, & ADDED OVERALL WIDTH DIMENSION TO SECTION A-A

8530KD 90K CLC 40' x 12' FOUNDATION DRAWING (FOOTINGS)
3 STATE, DESB LOAD CELL SECTION OF IOWA COMPLIANT

THURMAN SCALE
DRAWN: JCR
CHECKED: []
DATE: 05/04/11
SHEET: 1 OF 1
DRAWING NUMBER: 92462-FI-IA