

CONCRETE REQUIREMENTS
4000 P.S.I.

AREA	QUANTITIES
PIERS AS SHOWN	13.5 CU. YD.
APPROACHES	11 CU. YD.
FLOOR AT 2" THICK	6 CU. YD.
MODULES	31.5 CU. YD.
TOTAL	62 CU. YD.

MODULE REINFORCING BAR SCHEDULE
ASTM A615 GRADE 60

MARK	QTY.	SIZE	LENGTH	WT.	REMARKS
D1	98	#6	14'-6"	2135	(7) EA. BAY, PERPENDICULAR TO TRAFFIC
D2	224	#6	4'-6"	1515	(16) EA. BAY, PARALLEL TO TRAFFIC
TOTAL WT.: 3650					

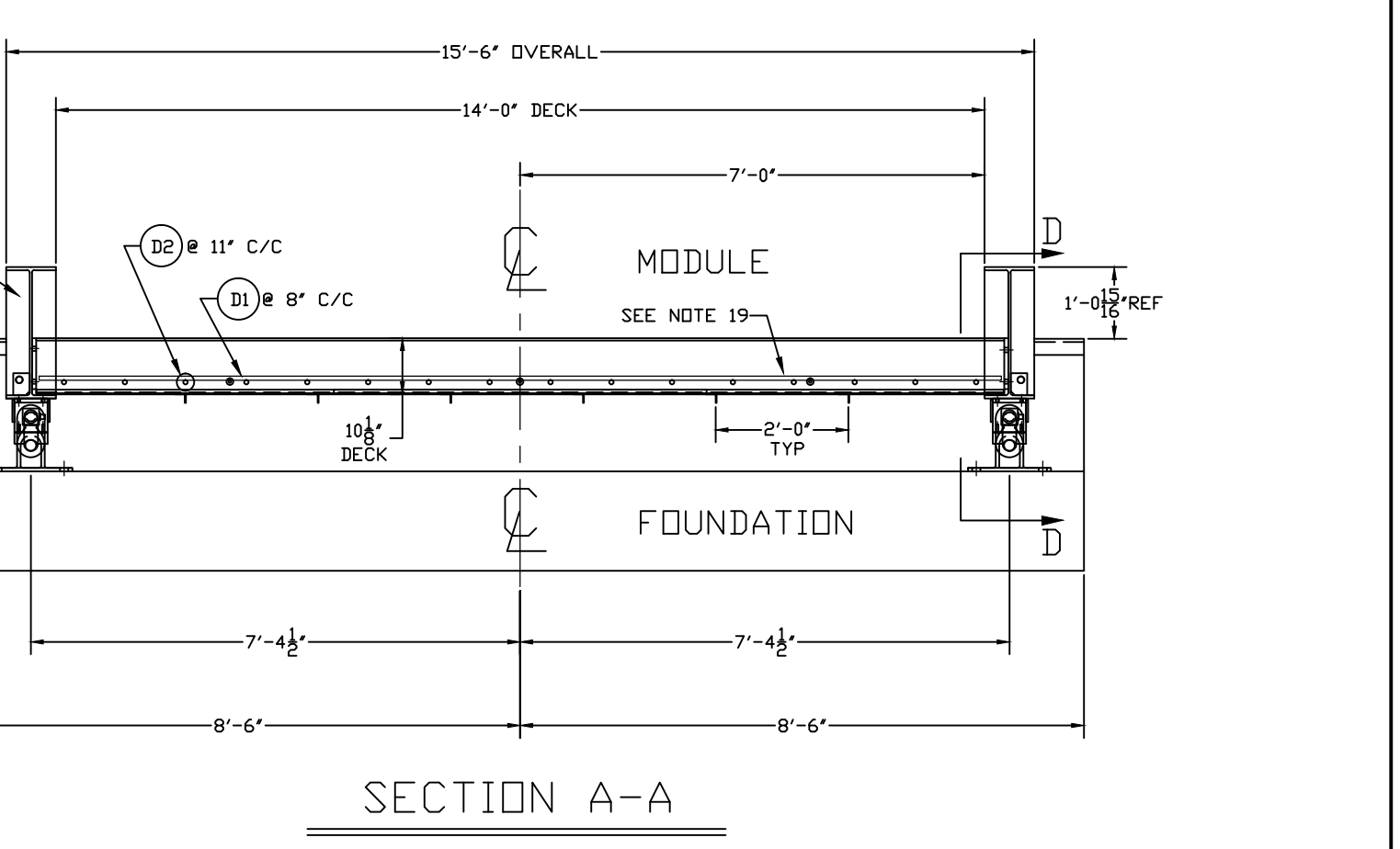
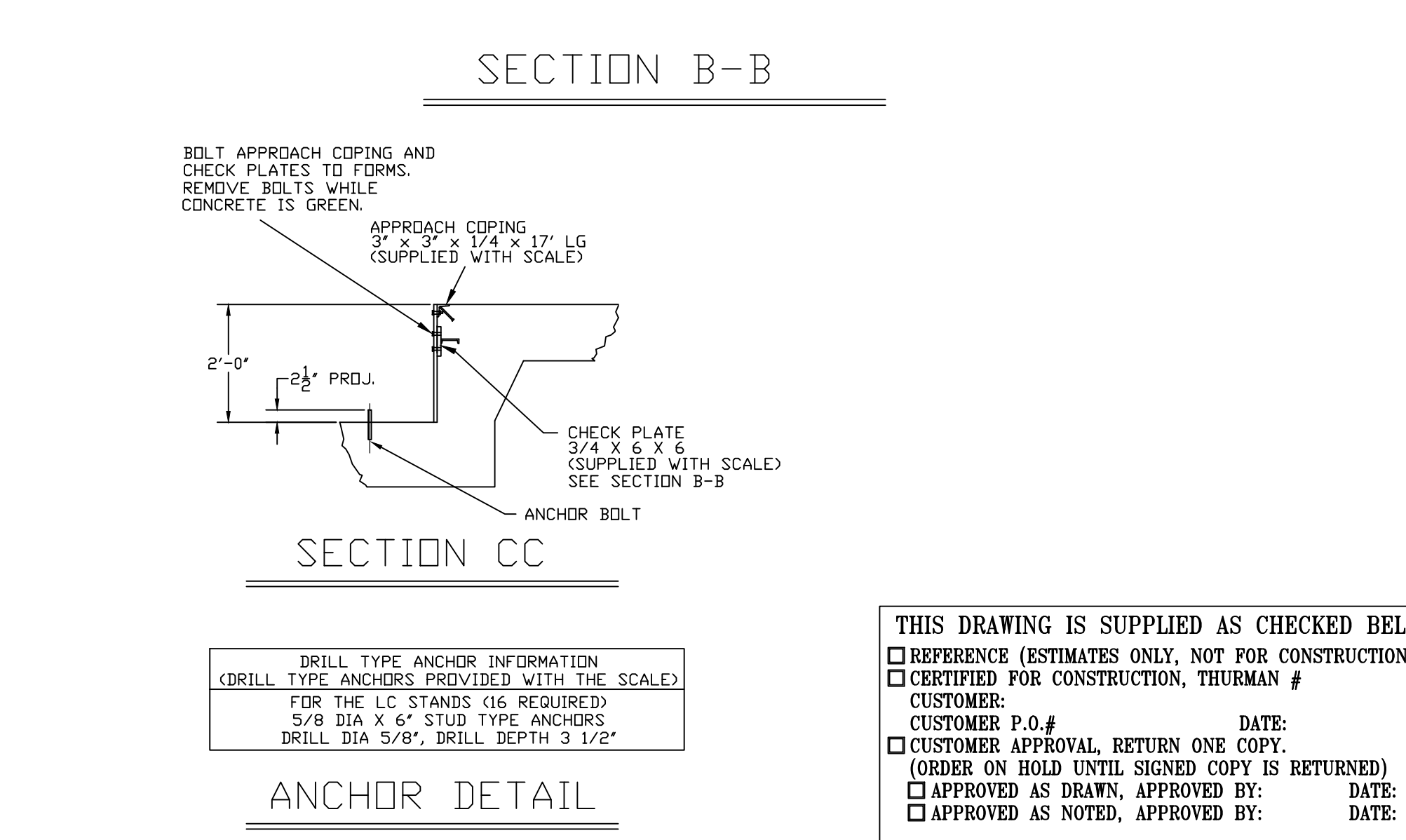
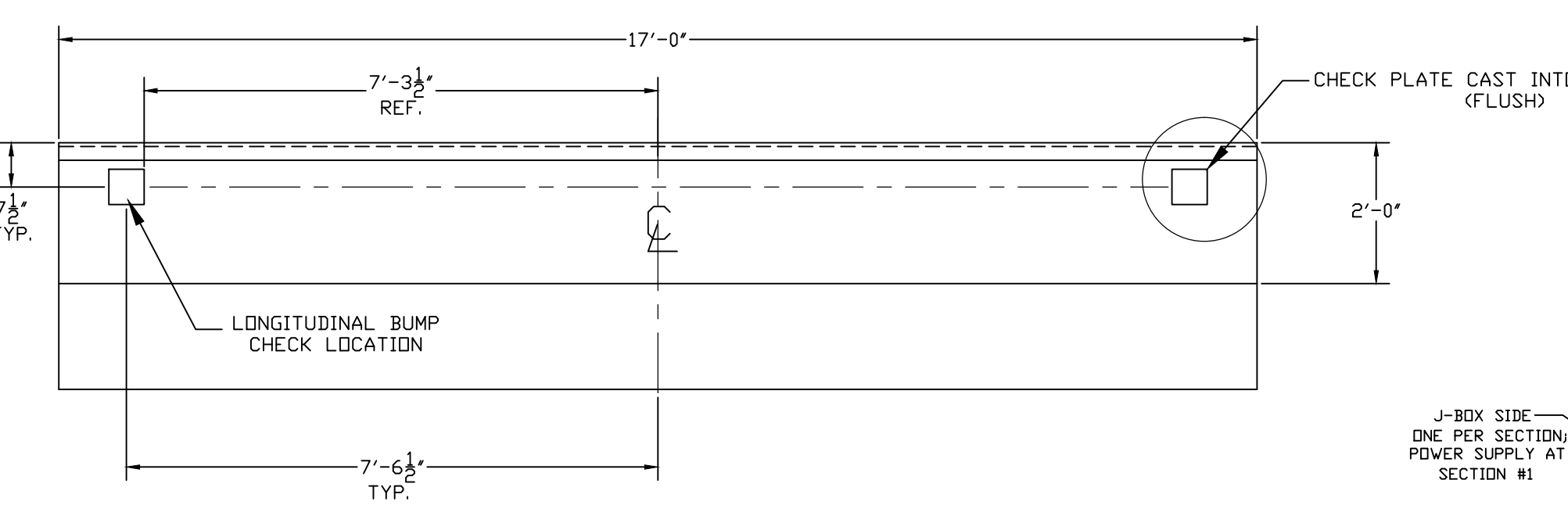
FOUNDATION REINFORCING BAR SCHEDULE
ASTM A615 GRADE 60

MARK	QTY.	SIZE	LENGTH	WT.	REMARKS
HR1	34	#4	9'-6"	216	(17) EA. APPROACH
HR2	60	#4	16'-6"	662	(16) EA. APPROACH; (7) EA. PIER BTM
HR3	136	#4	3'-0"	273	(34) EA. PIER TOP & BTM
HR4	40	#5	16'-6"	689	(10) EA. PIER TOP
VR1	68	#4	3'-0"	137	(34) EA. END WALL VERT
TOTAL WT.: 1977					

REINFORCING STEEL NOTES:

1. REINFORCING STEEL SHALL BE FREE OF ALL MUD, DEBRIS, CEMENT GROUT, LOOSE RUST, GREASE, AND OIL.
2. TACK WELDING OF BARS IS PROHIBITED.

- NOTES:
1. FOUNDATION DESIGN IS BASED ON A MINIMUM SOIL BEARING CAPACITY OF 3000 LB./SQ. FT. FOR SOIL CONDITIONS WHICH DO NOT MEET THIS SPECIFICATION, CONSULT WITH THE THURMAN SCALE COMPANY.
 2. THE FOUNDATION SHALL BE INSTALLED AT AN ELEVATION AND LOCATION TO INSURE ADEQUATE DRAINAGE AWAY FROM SCALE. A PERIMETER TRENCH AND AGGREGATE BASE MAY BE ADDED IF DRAINAGE IS NOT SUFFICIENT TO MAINTAIN 3000 LB./SQ. FT. BEARING CAPACITY.
 3. BOTTOM OF FOOTERS SHOULD EXTEND BELOW THE FROST LINE. AN 18 INCH FOOTER DEPTH IS MINIMUM.
 4. N.I.S.T. H-44 REQUIREMENTS AND LOCAL WEIGHTS AND MEASURES REGULATIONS MAY REQUIRE INSTALLATION PARAMETERS SOMEWHAT DIFFERENT THAN ILLUSTRATED ON THIS PLAN. IN ORDER TO INSURE COMPLIANCE CONSULT THE LOCAL WEIGHTS & MEASURES OFFICE PRIOR TO CONSTRUCTION.
 5. CONCRETE OF 4000 PSI MINIMUM COMPRESSIVE STRENGTH IS REQUIRED. WITH 5'-7" AIR ENTRAINMENT. VIBRATE CONCRETE WHEN POURING. FOLLOW LATEST ACI REQUIREMENTS FOR MATERIALS AND CONSTRUCTION. DO NOT CAST UNLESS TEMPERATURE IS ABOVE 40 DEGREES FAHRENHEIT.
 6. PIERS MUST BE LEVEL AND IN THE SAME PLANE WITHIN ±1/8 INCH.
 7. EXCAVATION, FORMS, REINFORCING STEEL, GUARD POSTS, AND CONCRETE FURNISHED BY OTHERS. OPTIONAL REBAR KITS (FOR THE SCALE DECK) ARE AVAILABLE FROM THURMAN.
 8. DO NOT PLACE REBAR IN CLOSE PROXIMITY OF ANCHOR BOLTS.
 9. A MINIMUM OF 24" OF CLEARANCE IS REQUIRED ON JUNCTION BOX SIDE OF THE SCALE NEAR THE BOX MOUNTS.
 10. CAUTION! THE MAIN GIRDERS SHOULD NEVER BE USED AS A STEP. SLIPPERY WHEN WET.
 11. POSITION LOAD CELL ASSEMBLIES IN APPROXIMATE LOCATIONS.
 12. ASSEMBLE THE GIRDERS W/ THE CHECK BLOCK AND PROVIDE FOR 2 LC FIRST. LAYOUT GIRDERS & LOOSELY ATTACH CROSSBEAMS. CROSS-SQUARE AND TIGHTEN BOLTS. JACK UP & ATTACH TOP BRACKETS & PIN SEATS TO THE BOTTOM FLANGE OF THE GIRDERS.
 13. SET THE LOADCELL ASSY UNDER THE PIN SEATS OF THE BASE MODULE.
 14. ASSEMBLE REMAINING MODULES BUILDING FROM THE BASE MODULE. PLACE NEXT PAIR OF GIRDERS ON STEP PLATE OF BASE MODULE & ON LOADCELL ASSY. INSTALL THE MODULE CONNECTION BOLTS THROUGH THE CONNECTION JOINT. LOOSELY ATTACH CROSSBEAMS. REPEAT UNTIL ALL MODULES ARE BUILT.
 15. CHECK SQUARENESS OF THE SCALE & ADJUST IF NECESSARY TO BRING INTO SQUARE. MAINTAIN EQUAL DISTANCE TO PIT WALL AT EACH END.
 16. TIGHTEN ALL CROSSBEAM BOLTS ONE-HALF TURN PAST SNUG. TIGHTEN ALL MODULE CONNECTION BOLTS. SET LONGITUDINAL CHECK BOLTS. ANCHOR STANDS AFTER LOADCELL ASSY PLUMB.
 17. TO PREVENT PAN FROM SAGGING WHILE POURING, ADDITIONAL SHORING SUPPORT BENEATH THE CORRUGATED PAN IS REQUIRED. THURMAN OFFERS OPTION SHORING KIT FOR THIS PURPOSE.
 18. CORRUGATED PAN SHOULD HAVE THE FOLLOWING MINIMUM SPECIFICATIONS: THICKNESS: 24 GAUGE MIN, PITCH: 2 1/2", HEIGHT: 5/8" MAX CUT TO LENGTH: 7'-0" x 2'-6"
 19. IF SUPPLIED WITH OPTIONAL REBAR MAT, TIE ABOVE STUDS. IF REINFORCEMENT SUPPLIED BY OTHERS, FOLLOW REBAR SCHEDULE.
 20. POUR CONCRETE. SEE NOTE 5 ABOVE.



LET	BY	DATE	REVISION
2	LDC	12/11/12	ADDED OVERALL WIDTH DIMENSION IN SECTION A-A
1	JCR	11/29/12	UPDATED CROSSBEAM & GIRDER SIZES; PROFILE WAS 1"-10"

THURMAN SCALE
COLUMBUS, OH

8530KD 90K CLC
70' X 14'
FOUNDATION (4 SECTION, DB LC)

DATE: 10/08/09
SCALE: N/A
DRAWN BY: NDC
CHECKED BY:
APPROVED BY:

DRAWING NUMBER: 92474-FT
SHEET 1 OF 1
REVISION: 2

THE MATERIAL AND INFORMATION CONTAINED HEREIN IS CONFIDENTIAL AND IS THE PROPERTY OF THURMAN SCALE COMPANY AND IS NOT TO BE USED, DISCLOSED, COPIED, TRANSMITTED, OR REPRODUCED WITHOUT THE PRIOR WRITTEN PERMISSION OF THURMAN SCALE COMPANY.

UNLESS OTHERWISE SPECIFIED: DIMENSIONS ARE IN INCHES TOLERANCES: FRACTIONS ±1/8" DECIMALS ±0.005 2-PLACE DECIMAL HOLE DIMETERS ±1/32"

MATERIAL: A36
FINISH: N/A

THIS DRAWING IS SUPPLIED AS CHECKED BELOW:

REFERENCE (ESTIMATES ONLY, NOT FOR CONSTRUCTION)

CERTIFIED FOR CONSTRUCTION, THURMAN #

CUSTOMER: _____ DATE: _____
CUSTOMER P.O.# _____
 CUSTOMER APPROVAL, RETURN ONE COPY. (ORDER ON HOLD UNTIL SIGNED COPY IS RETURNED)
 APPROVED AS DRAWN, APPROVED BY: _____ DATE: _____
 APPROVED AS NOTED, APPROVED BY: _____ DATE: _____