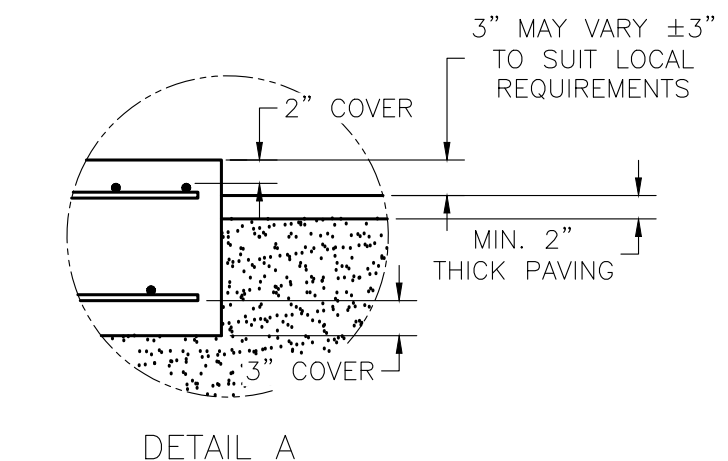


DRILL TYPE ANCHOR INFORMATION  
(DRILL TYPE ANCHORS PROVIDED WITH THE SCALE)  
FOR THE CORNER STANDS (16 REQUIRED)  
FOR THE FULCRUM & LC STANDS (10 REQUIRED)  
5/8 DIA X 6\"/>



OPTIONAL PAVED SURFACE (NON-LOAD BEARING) CONCRETE OR ASPHALT BETWEEN PIERS TO FACILITATE CLEANING. A 12\"/>

REMOVE TOP SOIL. NOTE: THE SUBGRADE MUST BE FIRM AND UNYIELDING. COMPACT IN NECESSARY. BACKFILL WITH THE BEST AVAILABLE MATERIAL. AGGREGATE PREFERRED. COMPACT AS REQUIRED.

**NOTES:**

- FOUNDATION DESIGN IS BASED ON A MINIMUM SOIL BEARING CAPACITY OF 3000 LB/SQ. FT. FOR SOIL CONDITIONS WHICH DO NOT MEET THIS SPECIFICATION, CONSULT WITH THE THURMAN SCALE COMPANY.
- THE FOUNDATION SHALL BE INSTALLED AT AN ELEVATION AND LOCATION TO INSURE ADEQUATE DRAINAGE AWAY FROM SCALE. A PERIMETER TRENCH AND AGGREGATE BASE MAY BE ADDED IF DRAINAGE IS NOT SUFFICIENT TO MAINTAIN 3000 LB/SQ. FT. BEARING CAPACITY.
- BOTTOM OF FOOTERS SHOULD EXTEND BELOW THE FROST LINE. AN 18 INCH FOOTER DEPTH IS MINIMUM.
- N.I.S.T. H-44 REQUIREMENTS AND LOCAL WEIGHTS AND MEASURES REGULATIONS MAY REQUIRE INSTALLATION PARAMETERS SOMEWHAT DIFFERENT THAN ILLUSTRATED ON THIS PLAN. IN ORDER TO INSURE COMPLIANCE, CONSULT THE LOCAL WEIGHTS & MEASURES OFFICE PRIOR TO CONSTRUCTION.
- CONCRETE OF 4000 PSI MINIMUM COMPRESSIVE STRENGTH IS REQUIRED, WITH 5-7% AIR ENTRAINMENT. VIBRATE CONCRETE WHEN POURING. FOLLOW LATEST ACI REQUIREMENTS FOR MATERIALS AND CONSTRUCTION. DO NOT CAST UNLESS TEMPERATURE IS ABOVE 40 DEGREES FAHRENHEIT.
- PIERS MUST BE LEVEL AND IN THE SAME PLANE WITHIN ±1/8 INCH.
- EXCAVATION, FORMS, REINFORCING STEEL, GUARD POSTS, AND CONCRETE FURNISHED BY OTHERS.
- DO NOT PLACE REBAR IN CLOSE PROXIMITY TO ANCHOR BOLTS.

**DECK REINFORCEMENT**

- CORRUGATED PAN SHOULD RUN WITH THE LENGTH OF THE SCALE ACROSS THE CROSSBEAMS. RECOMMENDED SIZE: 22GA, 6\"/>
- POUR CONCRETE. SEE NOTE 5 ABOVE.
- CAUTION! THE MAIN GIRDERS SHOULD NEVER BE USED AS A STEP. SLIPPERY WHEN WET.

**MODULE REINFORCING SCHEDULE**  
ASTM 615 - GRADE 60

MODULE	MARK	QTY	SIZE	LENGTH	WEIGHT (LBS)	COMMENT
(2) 25'x10'	D1	52	#4	9'-6"	330	(26) LAT. EA. MODULE
	D2	40	#4	24'-6"	655	(20) LONG. EA. MODULE
20'x10'	D1	21	#4	9'-6"	134	(21) LAT. EA. MODULE
	D2	20	#4	19'-6"	261	(20) LONG. EA. MODULE
TOTAL WEIGHT					1,380	

**FOUNDATION REINFORCING SCHEDULE**  
ASTM 615 - GRADE 60

MARK	QTY	SIZE	LENGTH	WEIGHT (LBS)	COMMENT	
HR1	28	#4	9'-6"	178	LONG. EA. APPROACH	
HR2	96	#4	13'-11"	593	LAT. EA. APPROACH; PIER	
HR3	112	#4	3'-0"	225	LONG. EA. PIER	
HR4	2	#4	5'-0"	7	LONG. DUAL FULCRUM PIER	
HR5	12	#4	1'-4"	11	LAT. EA. FULCRUM PIER	
HR6	6	#4	2'-0"	9	LONG. EA. FULCRUM PIER; LC PIER	
HR7	3	#4	1'-0"	2	LAT. LOAD CELL PIER	
VR1	56	#4	3'-1"	116	VERT. EA. END WALL	
TOTAL WEIGHT					1,441	

**FOUNDATION CONCRETE**  
4000 PSI MINIMUM

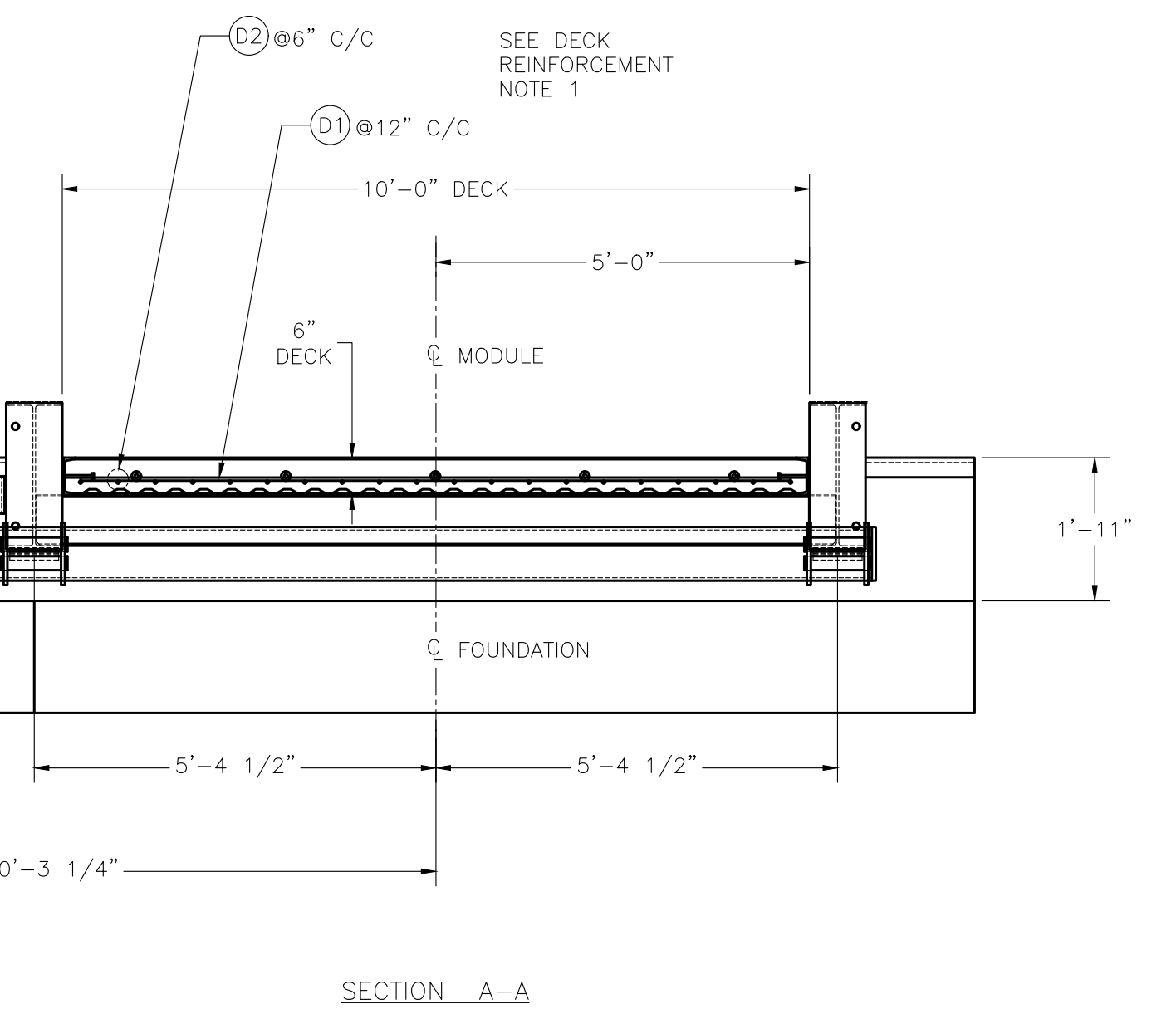
LOCATION	QTY (CU. YDS)
PIERS AS SHOWN	12.6
FLOOR AT 2\"/>	5.2
APPROACHES	9.3
MODULES	13.1
OPTIONAL APPROACH SUPPORTS	3.0
<b>TOTAL CONCRETE</b>	<b>43.2</b>

CONCRETE POURING & FINISHING INSTRUCTIONS FOR SCALE DECK:  
1. FINISH THE CONCRETE DECK WITH A BULL FLOAT AND HAND TROWEL OR BROOM TO THE DESIRED FINISH.  
2. THE CONCRETE IS TO BE MOIST CURED FOR SEVEN DAYS OR MAY ALTERNATIVELY RECEIVE A COAT OF LIQUID CURING COMPOUND.  
3. DO NOT USE OR CALIBRATE THE SCALE UNTIL THE DECK IS CURED AND HAS REACHED 4000 PSI MINIMUM COMPRESSIVE STRENGTH.

**REINFORCING STEEL NOTES:**  
1. REINFORCING STEEL SHALL BE FREE OF ALL MUD, DEBRIS, CEMENT GROUT, LOOSE RUST, GREASE, AND OIL.  
2. TACK WELDING OF BARS IS PROHIBITED.

THIS DRAWING IS SUPPLIED AS CHECKED BELOW:  
 REFERENCE (ESTIMATES ONLY, NOT FOR CONSTRUCTION)  
 CERTIFIED FOR CONSTRUCTION, THURMAN SERIAL#

CUSTOMER: \_\_\_\_\_ DATE: \_\_\_\_\_  
CUSTOMER P.O.# \_\_\_\_\_  
 CUSTOMER APPROVAL, RETURN ONE COPY.  
 ORDER ON HOLD UNTIL SIGNED COPY IS RETURNED  
 APPROVED AS DRAWING, APPROVED BY: \_\_\_\_\_ DATE: \_\_\_\_\_  
 APPROVED AS NOTED, APPROVED BY: \_\_\_\_\_ DATE: \_\_\_\_\_



**REVISIONS**

REV	BY	DATE	DESCRIPTION
1	JCR	5/21/2015	UPDATED ANCHOR LOCATIONS FOR LARGER CORNER STANDS (8\"/>

8130 90K 70'x10'  
(PIER TYPE FOUNDATION, 4 SEC)

THURMAN SCALE

SCALE: NTS DRAWN: JCR CHECKED: \_\_\_\_\_  
SHEET: 1 OF 1 DATE: 01/20/12 APPROVED: \_\_\_\_\_  
DRAWING NUMBER: 92660-FT REV: 1