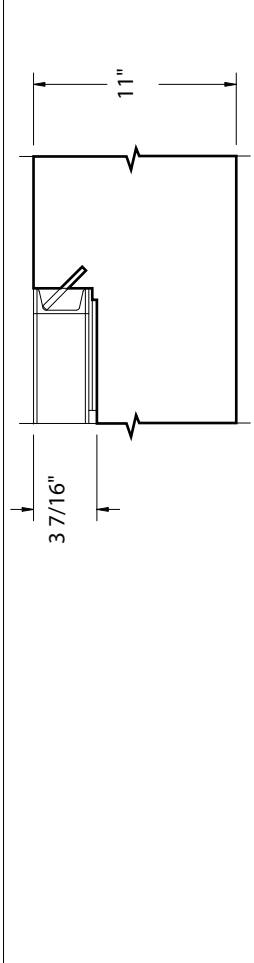
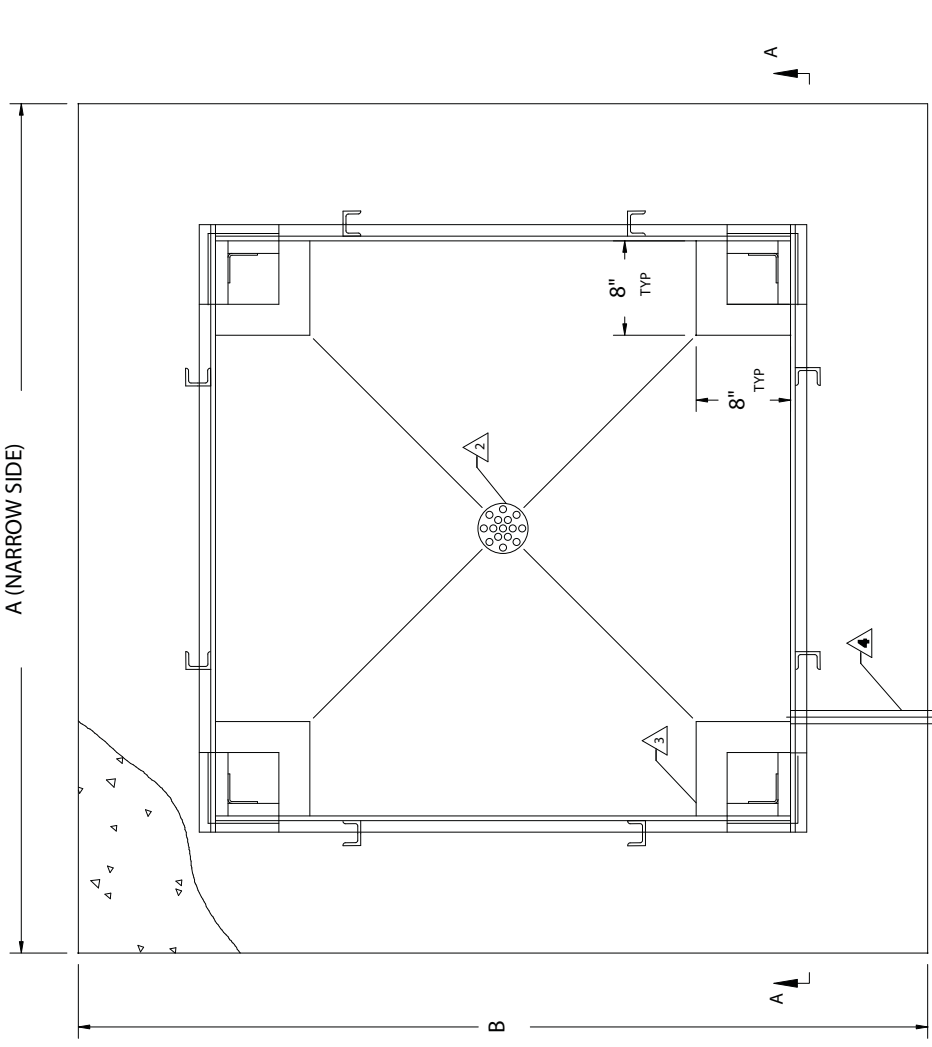


PLATFORM SIZE	A	B
3' X 3'	5'	5'
4' X 4'	6'	6'
4' X 5'	6'	7'
4' X 6'	6'	8'
5' X 5'	7'	7'
5' X 7'	7'	9'
6' X 8'	8'	10'

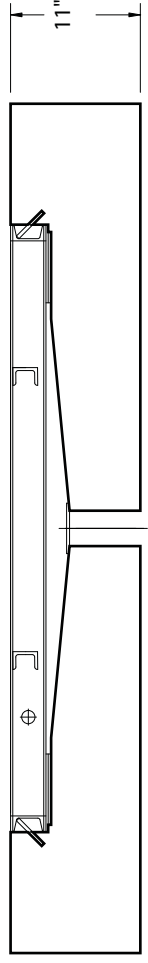


B-B VIEW

A (NARROW SIDE)



A-A VIEW
INSTALLATION OF PIT FRAME
POURED CONCRETE BASED ON THE SIZE
1K-10K



- NOTE:
- A PIT FRAME IS ONE-PIECE WELDED UNIT (NO FIELD WELDING REQUIRED).
 - THE PIT DIMENSIONS ARE DETERMINED BY THE PIT FRAME ACCESSORIES.
 - AT LEAST 6" THICKNESS OF CONCRETE IS REQUIRED FOR PIT FLOOR IN NON-HOSTILE APPLICATIONS.
 - AT LEAST 11" CONCRETE FLOOR WITH MINIMUM 3" BOTTOM SLOPE (AS SHOWN) IS REQUIRED IF DRAINAGE IS REQUIRED FOR HOSTILE APPLICATION. A 4" DIA. DRAIN IS RECOMMENDED.
 - A SOIL BEARING PRESSURE OF AT LEAST 1,000 LBS PER SQUARE FT. IS REQUIRED. THE CORNER PIER SHOULD BE DESIGNED TO SUPPORT AT LEAST TWO THIRDS OF THE TOTAL CAPACITY OF THE SCALE.
 - A 3/4" DIA. CONDUIT FOR SCALE INTERFACE CABLE IS RECOMMENDED. THE PIT FRAME IS ARRANGED WITH A 1 7/8" DIA. HOLE FOR CABLE EXIT. LOCATE CONDUIT TO MATCH HOLE LOCATION.
 - WITH THE FRAME LEVEL (±1/8") IN BOTH DIRECTIONS, AND SECURED, CONCRETE IS FILLED IN AROUND THE OUTSIDE OF PIT FRAME AND PIT FLOOR TO FORM SCALE PIT. IT IS RECOMMENDED THAT $f = 3500$ PSI AND 3" TO 4" SLUMP CONCRETE BE USED.
 - WHEN THE CONCRETE HAS REACHED A MINIMUM OF 2000 PSI, PULL THE INTERFACE CABLE THROUGH THE CONDUIT TO THE INSTRUMENT LOCATION, AND LOWER THE PLATFORM ASSEMBLY INTO POSITION.
 - WITH THE SCALE IN THE PLACE, THE CLEARANCE AROUND THE EDGE OF THE PLATFORM AND PIT CORING SHOULD BE 1/4" TO 3/8".

NO.	BY	DATE	REVISION
1		8/11/00	
2		10/23/02	

DATE	8/11/00
SCALE	N/A
DESIGNED BY	JSH
CHECKED BY	JSH
APPROVED BY	JSH
DATE	8/11/00

THURMAN SCALES	1	of	1
Meridian, Mississippi			
PIT INSTALLATION			
1 - 10K, MS AND SS			
AEGIS BASIC & PROFILE			

The material and information furnished and is the property of Thurman Scales and is not to be used, disclosed, copied, or reproduced for any other purpose without the prior written permission of Thurman.		Unless otherwise specified, dimensions are in inches.	
		Tolerances: Fractions: ± 1/16"	
		Decimals: ± 0.005 inches; 1"	
		3 place decimals: ± 0.001"	
		2 place decimals: ± 0.005"	
		Hole diameters: ± 0.002"	